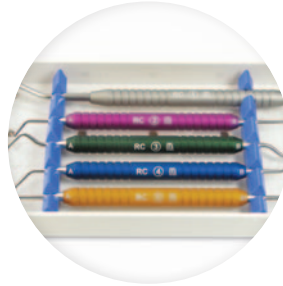


Osseous Technologies of America

Accessories for Implantology



IMPLANT SURGERY

SINUS LIFT SURGERY

BIOLOGICS

RESTORING IMPLANTS

ACCESSORIES FOR IMPLANTOLOGY



**IMPLANT
SURGERY**

**SINUS LIFT
SURGERY**

BIOLOGICS

**RESTORING
IMPLANTS**

About Us

Osseous Technologies of America develops and markets innovative, high quality products for both surgeons and restorative clinicians. By attending Tradeshows and Workshops domestically and internationally, our company has had great exposure throughout the world.

Late last year we signed an exclusive distribution agreement with the world's largest orthopedic company, Zimmer® Dental. Zimmer is now the world-wide exclusive distributor of the Balloon for Sinus Lifts and the OTA line of Collagen Products.

With the addition of Zimmer as the exclusive distributor of our Sinus Lift Balloons and our OTA Collagen Capsules, Wedge and CurV™ products, we anticipate continuous growth throughout 2010 and 2011! We are sure our line of unique collagen intellectual property products will be very exciting to the dental market.

As our list of intellectual property products grows, we have filed more provisional patents and have several new products for which we plan to file patents. With innovative ideas and high motivation, our team works day and night to provide unique and outstanding products. We are setting ourselves up for tremendous success!

Thank you for helping to make OTA a success! We truly look forward to continuing to serve you and our market and hope that you, as our customer, will continue to support us in the coming years.

We look forward to exciting times ahead!

William K. Knox
President/CEO

- Founded 2003
- Unique products for Implantology
- FDA Establishment Registration #3004786271

Osseous Technologies of America

TABLE OF CONTENTS

IMPLANT SURGERY

Periotomes	2
Periotomes, Molar	3
Gliders, Osseous	4
Collectors, Osseous	5
Easy X-TRAC	6
Expanders, Bone	7
Calipers	8
Calipers, Right Angled	9
Clamps, Fixation	10-11
Balls, Marking	12
Scissors, Suture Removal	12
Funnel, Bone	13
Packers, Graft	13
Press, Osseous	14
Mill, Osseous.	14
Grafter, Osseo-Tip	15
Chisels, Ridge Splitting	16
Drills, Trepine	17
Punches, Tissue	18
Drills, Extended Length	19
Drill Stops	20-21
Depth Gauges	20-21
Osteotomes, Angled	22
Pins, Surgical Guide.	23
Motor, Anthogyr.	24
Vibraject.	25
Drivers, Implant	26
Adapter, Square to Latch	26
Drivers, Implant	27
Bits, Square (for Implant Drivers).	27
Drivers, Universal, Implant.	28
Box for Bits	29
Instruments, Capsule Delivery	30
Instruments, Scissors Collagen.	31
Punch, Dental Hole	31
Instrument, Placement Collagen	32

SINUS LIFT SURGERY

Balloon for Sinus Lifts	34
Kit, Sinus Lift RCSLK	36
Kit, Sinus Lift ZM	38
Kit, Sinus Lift Standard	39
Reamer, Hatch	40

BIOLOGICS

Collagen.	42-43
Collagen, Socket Capsule	44
Collagen, Sinus Capsule	46
Collagen, Wedge	46
Collagen, CurV Posterior	47
Collagen, CurV Anterior	48
Collagen, Resorbable.	49
Grafting, Osteokor	50
Grafting, algisorb (C-Graft)	51
Grafting, Premier TCP	52

RESTORING IMPLANT

Holder, Analog	56
Puller, Crown	57
Wrench, Universal Torque	58
Wrench, Adjustable Torque	59
Driver, Right Angled.	60
Driver, Right Angled Torque Adapters	60
Driver, Bits, Latch-type	61
Drivers, Universal Set of 7 Long	62
Drivers, Universal Set of 7 Short	63
Drivers, Universal, Implant.	64
Box, Autoclave for Components	65
Holder, Abutment	66
Cement, Temporary, Impatemp	67
Retractor, Nessif	68
Floss, Dental Dispenser	68

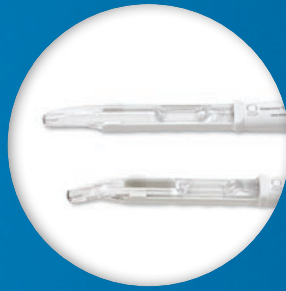
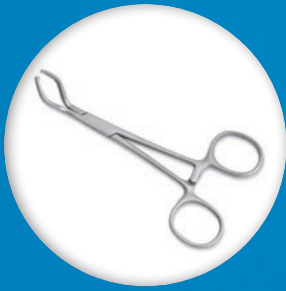
Customization Services. 70-71

Shipping Rates and Delivery 72-73

Distributors 74-75

Prices subject to change without notice

IMPLANT SURGERY



Periotomes

A tremendous value

For atraumatic extractions, OTA periotomes compare favorably to competitive units costing almost twice as much. They feature strong, one-piece construction and the apical end is flat so it can be used for tapping. You can use a mallet to minimize vibration.

OTA periotomes come in four different blade configurations—thick, thin and two angled—and are color-coded for easy identification. Gold and blue periotomes are indicated for labial/buccal and lingual/palatal sides of the tooth. Gray and green periotomes are for the mesial and distal sides of the tooth. They are available in sets of four, and also individually.



Note: Periotomes should not be used to leverage a tooth. They are intended to sever the periodontal ligaments and to separate the periodontal fibers along the surface of the root. Refer to instructions for use for more information.



OTA400	Set of 4	\$150
OTA301	Blue Periotome	\$40
OTA302	Gray Periotome	\$40
OTA303	Gold Periotome	\$40
OTA350	Green Periotome	\$40

Periotomes are provided non-sterile and must be sterilized prior to clinical use.

Molar Region Periotomes

Our Molar Region Periotomes are ideal for atraumatic extractions in the molar region. They come in two different blade configurations and are color-coded for easy identification.

Molar Region Periotomes

OTA405	Red	\$85
OTA406	Gold	\$85



NEW!



Note: Periotomes should not be used to leverage a tooth. They are intended to sever the periodontal ligaments and to separate the periodontal fibers along the surface of the root. Refer to instructions for use for more information.

Osseous Glider

The disposable bone scraper that always has a fresh blade

Tired of harvesting bone shavings with a scraper that won't stay sharp? Then it's time you tried the OTA Osseous Glider. The 360° blade is marked into four sections. As the blade starts to dull, you can expose a new cutting surface by simply twisting the blade with any .050 hex driver. There's no easier way to precisely harvest bone in an atraumatic manner.

Because of restrictions in the posterior of the mouth, the straight Osseous Glider is recommended for the ramus, symphysis and tuberosity areas.

The angled Osseous Glider is optimized for the external oblique ridge. If you've never used an angled Glider in this area of the mouth, you won't believe how much easier it is to use than a straight Glider. The secret is to hold the angled Glider at a 35 degree angle on the ridge.



OTA200 Osseous Glider, Straight \$50

OTA205 Osseous Glider, Angled \$50



Osseous Collector

Stop wasting valuable bone

Here is a fast, easy, way to harvest valuable autogenous bone that can be used to correct small defects around dental implants and periodontal compromised teeth. The OTA Osseous Collector features a unique shut-off valve that allows you to shut off the suction so you don't dry out the bone. Included with each collector are two filters, so you'll have plenty of capacity for large implant cases. Just as important, because the unit is disposable, no cleaning is required. Your staff will love that!

Osseous Collectors are extremely economical. The entire unit costs less than the filter alone for most metal collectors. The collectors are supplied sterile and sold in packs of 10. They are for single-patient use only and can not be re-sterilized or reused.

OTA100 Osseous Collector, Pack of 10 \$140

OTA100 H Autoclavable Hi Vac Adapter \$10



Amount of bone collected from implant drills.



Minimally-invasive tooth extraction

Easy as 1, 2, 3!

The Easy X-TRAC® technique allows you to execute an absolute atraumatic extraction with no rotary movements, zero bone loss, and no post-traumatic swelling. It also gives you the ability to perform an efficient extraction that minimizes patient discomfort and provides you the opportunity to successfully place immediate implants.

Kit includes: XT100 Easy X-TRACTOR, XT110 (set of 3 drills), XT120 X-TRAC ratchet, XT128 (set of 3 screws), XT133 (set of 3 screws), XT140L (left side protector plate), XT140R (right side protector plate), XT150 (burr block for drills and screws), and a Tutorial CD-ROM.



OTAEZ Easy X-TRAC \$2,499

Bone Expander

An Alternative to Osteotomes

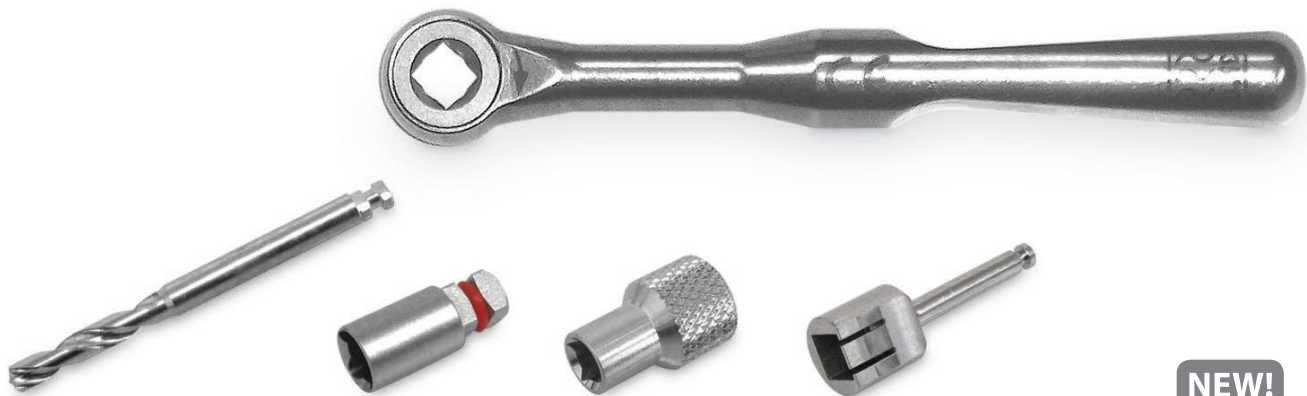
Bone expander drills are an alternative to osteotomes for the expansion and condensing of the atrophic mandible and maxilla in preparation for dental implant insertions. Expanders are also an alternative to the maxillary sinus elevation technique.

Expanders are driven into the bone with a ratchet wrench or low speed hand piece. This decreases the surgical trauma of osteotomes. Bone expanders improve the clinical success by improving stability, maintaining bone density and increasing fixation.

The Bone Expander Kit includes 5 color-coded bone expanders (2.6, 3.0, 3.4, 3.8 and 4.3mm), a ratchet wrench, a pilot drill, a ratchet wrench connector, a hand piece connector and a thumb knob for finger usage. The kit is autoclavable.



IMPLANT SURGERY



NEW!



Score lines on expanders

- 10 mm
- 8 mm
- 6 mm
- 4 mm

OTABEK Bone Expander Kit \$495

Osseous Calipers

Three styles, including our exclusive right-angled calipers

For precise measuring of bone defects for block grafts, you can't do better than our Osseous Calipers. Sure, you can spend more, but why? It simply doesn't make sense when these high-quality calipers are available at such a reasonable price.

Choose from long and short calipers with 30 degree angled tips. Both models measure from 0 to 40mm.

OC Osseous Caliper, Long \$195

OC-Short Osseous Caliper, Short \$195



Osseous Right-Angled Calipers

Bone measuring made easy

Known as the “poor man’s CAT scan,” these right-angled calipers are ideal for measuring bone through soft tissue. They show you an approximation of the bone needed for remapping to assure you that there aren’t any contours on the ridge. They’re especially useful for one piece, one stage implants.

Like our regular Calipers, the quality of these right-angled calipers is outstanding. You can pay more, but you won’t find better calipers anywhere else.

OCRA Right Angled Caliper \$195



Osseous Fixation Instruments

Including our exclusive 45 and 90 degree angled clamps

If you've been looking for the perfect way to hold the donor block while placing fixation screws, then look no further! Only OTA has clamps like these. Our exclusive 45 and 90 degree angled clamps are perfect for use on the posterior maxilla and mandible. Straight models are also available. All clamp styles feature precision ratchets to securely hold the block in place, while minimizing the chance of block breakage.



Micro Osseous Clamp, 45°



Micro Osseous Clamp, 90°



Micro Osseous Clamp, Short

6" Micro Fixation Clamps \$195 each

OBC45MF Micro Fixation Clamp, 45°

OBC90MF Micro Fixation Clamp, 90°

OBCSMF Micro Fixation Clamp, Short

9" Macro Fixation Clamps* \$195 each

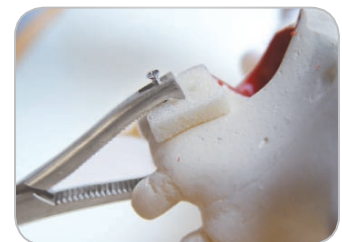
OBC-45 Macro Fixation Clamp, 45°

OBC-90 Macro Fixation Clamp, 90°

OBC-S Macro Fixation Clamp, Short

OBC-L Macro Fixation Clamp, Long

* Developed by Dr. Jay P. Malmquist.





Macro Fixation Clamp, 45°



Macro Fixation Clamp, 90°



Macro Fixation Clamp, Short



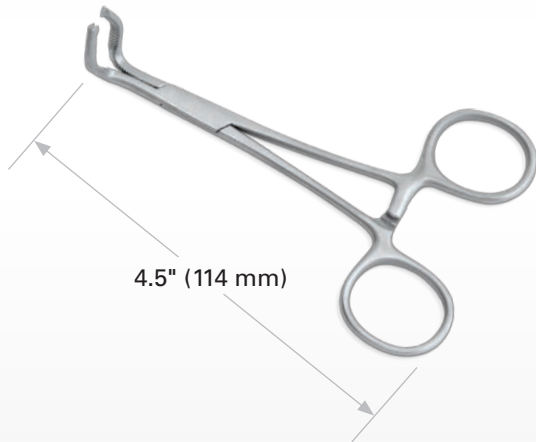
Macro Fixation Clamp, Long

Micro Fixation Clamp

Macro Fixation Clamp

SHORT

LONG



4.5" (114 mm)

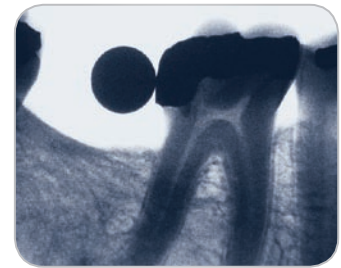


5" (127 mm)

Radiographic Markers

Measure bone accurately

Radiographic markers are an absolute necessity to accurately measure bone. By placing a 5mm stainless steel marking ball in the image, it's easy to accurately measure the exact amount of bone available for implant placement. Corrections should be made for the degree of magnification produced by the radiographic equipment in use.



Set of 50 Markers (5mm Diameter) \$25

Suture Removal Scissors

Good value

Our suture removal scissors feature a hooked end to easily lift the suture. Two styles are available—straight and angled.



SS1 Suture Removal Scissors, Straight \$35

SS2 Suture Removal Scissors, Angled \$35

Osseous Bone Funnel

Compare to others at \$125 and above

Our stainless steel bone funnel measures 3.5mm in diameter and holds approximately 1.5cc of graft material. Use with particulate or flowable graft material.

OTA505 Bone Funnels \$95
3.5mm, curved



IMPLANT SURGERY

Graft Packers

High-quality set of two

Made from stainless steel, these versatile graft packers are easy to use, even in areas that are difficult to access.

OTA541 Graft Packer Set \$75



Osseous Press

Turn cortical cancellous bone into particulate graft material

This heavy-duty press belongs in every implant surgeon's office. It's the ideal way to morselize bone. The Osseous Bone Press is autoclavable.

OSS-P100 Osseous Press \$500



Osseous Mill

Finally, a bone mill that's easy to use

Looking for an easier way to grind cortical bone? The unique ratchet handle on our bone mill is extremely easy to turn. No more sore wrists and arms! You and your staff will appreciate how easy it is to use. It's also very easy to assemble and clean.

The Osseous Bone Mill comes with a sturdy carrying case so you can easily move it between multiple locations. As you can see by the price, it's also an excellent value.

OSS-M100 Osseous Mill \$1,750

OSS-M103 Replacement Blades \$650



Osseo-Tip™ Bone Grafter

Bone harvesting without hand fatigue

Osseo-Tip™ collects all the bone chips into a removable cup that would otherwise have been wasted during the drilling procedure. After drilling, you simply empty the cup and autogenous bone is ready for immediate use.

Osseo-Tip™ is designed to fit your contra-angle handpiece and is fully autoclavable.

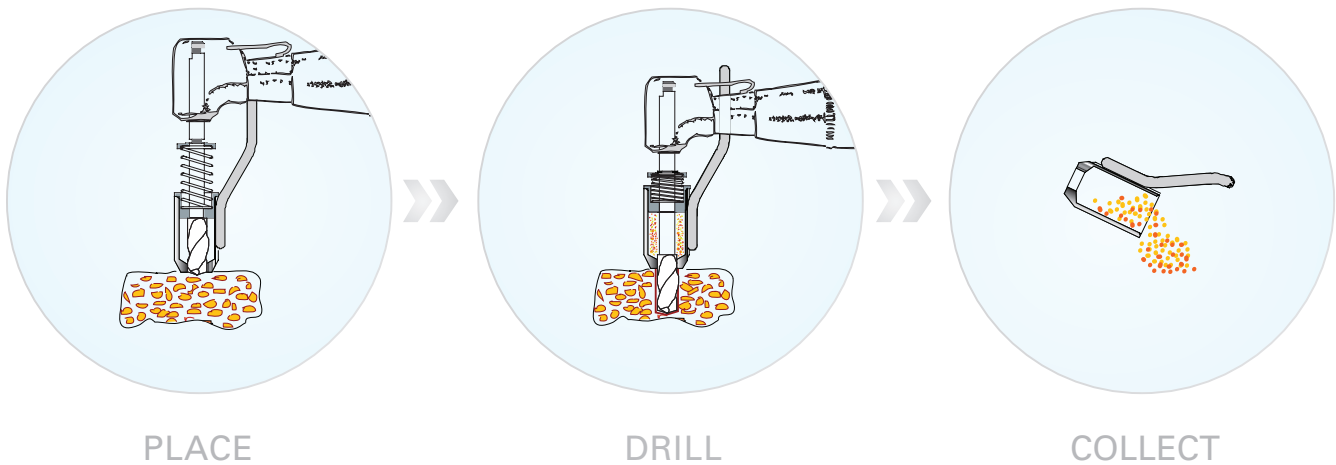
“The Osseo-Tip™ Bone Grafter proved to be an effective way to harvest sufficient quantities of autogenous bone without the need to employ a bone mill or morselizer. It allowed for bone to be harvested in a safe and rapid manner with no hand fatigue, and without creating a secondary surgical site.”

– Dr. Doug-Seok Sohn

OTA930 Osseo-Tip™ Bone Grafter \$129.95



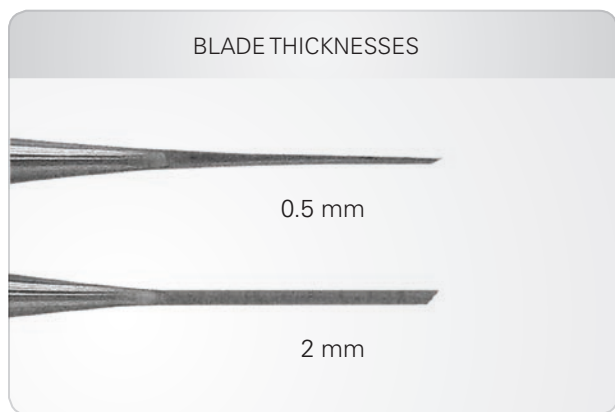
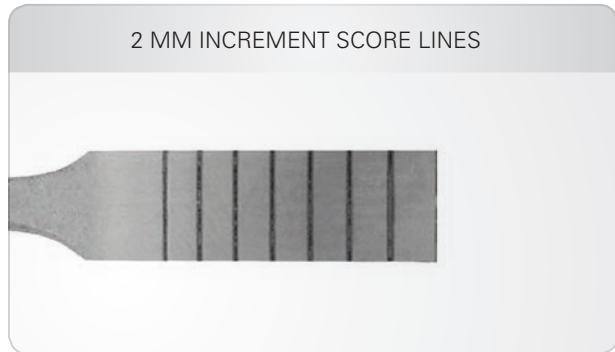
IMPLANT SURGERY



Bone Chisels

For implant placement

Ridge splitting chisels are available in two thicknesses. Each blade is calibrated with score lines marked at 2mm increments.



NEW!

OTARSC Bone Chisels \$175
Set of 4 instruments

Trephine Drills

Easy to cut through cortical bone

OTA Trephine Drills come in various diameters and can be used for biopsies, harvesting, or for removal of a dental implant. They are available in a set of six and also individually.

Long Trephine Drills		Short Trephine Drills	
Internal/External diameter	Part no.	Internal/External diameter	Part no.
2.0/3.0 mm	OTA408-1	2.0/3.0 mm	OTA409-1
3.5/4.5 mm	OTA408-2	4.0/5.0 mm	OTA409-2
4.25/5.2 mm	OTA408-3	6.0/7.0 mm	OTA409-3
5.0/6.0 mm	OTA408-4	8.0/9.0 mm	OTA409-4
6.0/7.0 mm	OTA408-5	10.0/11.0 mm	OTA409-5
8.0/9.0mm	OTA408-6	12.0/13.0mm	OTA409-6



NEW!

IMPLANT SURGERY



OTA408 Trephine Drills, Long \$400
Set of 6 drills

OTA409 Trephine Drills, Short \$400
Set of 6 drills

Individual Trephine Drills \$75 each

Tissue Punches

Stainless steel multi-use tissue punches

OTA Tissue Punches are designed to cut cortical bone and hard tissue.
OTA Tissue Punches come in 8 mm lengths and the following diameters:
3.5 mm, 4.0 mm, 5.0 mm and 6.0 mm

OTA407 Tissue Punches \$275
Set of 4

Individual Tissue Punches \$75 each
OTA407-1 (3.5 mm)
OTA407-2 (4.0 mm)
OTA407-3 (5.0 mm)
OTA407-4 (6.0 mm)



NEW!

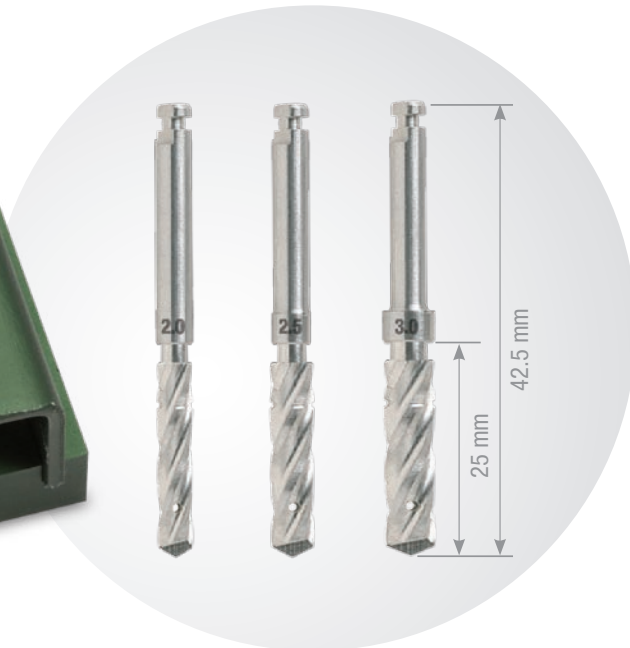


Universal Extended Length Drill Pack

Increased length for perfect positioning

Universal Extended Drills make it significantly easier to place implants between existing teeth. With the ever-increasing complexity and size of newly developed surgical guides, it is becoming even more difficult to work precisely within such limited work space.

Compared to other options for drilling precise osteotomies, these drills provide increased length for positioning implants in places where conventional armamentarium will not reach. The extremely sharp cutting edges and unique shape of these drills allow for precise positioning in the host bone.



OTA500 Universal Extended Length Drill Pack \$375
Set of 3 drills

Verban DrillStops and Depth Gauges

Safety, precision and peace of mind

Clearly seeing the depth markings on the drills is a common difficulty faced by dental surgeons. Having a detachable stop to control the drill penetration into the bone can help surgeons overcome that difficulty, it also greatly improves placement precision and safety.

Developed by Dr. Emil Verban, DrillStops and Depth Gauges provide surgeons precise depth control and peace of mind—they no longer need to keep eyes on the depth markings and focus on the axial dimension simultaneously. The depth stop is fabricated of surgical stainless steel and can be reused.

DRILLSTOPS

- Compatible with long Straumann and BlueSky Bio Drills
- .050 Hex required for set screw
- 8/10/12/14mm depth control
- Same stop fits all drill diameters
- Allows surgeon to focus on the axial dimension
- Precise control of osteotomy depth
- Autoclavable and reusable
- Stops can be incorporated into a surgical guide—model or CT generated



One stage DrillStop featured on drill

NEW!

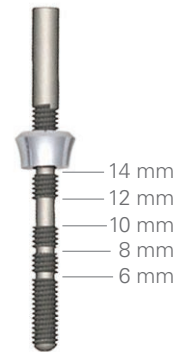
One Stage Drill Stops		
Product	Part no.	Price
DrillStop – 8mm long	EVM2L8	\$95.00
DrillStop – 10mm long	EVM2L10	\$95.00
DrillStop – 12mm long	EVM2L12	\$95.00
DrillStop – 14mm long	EVM2L14	\$95.00



DEPTH GAUGES

- 2.2 mm probe for better implant placement
- Adjustable collar simulates platform position
- Threaded design allows collar to be positioned for 6-8-10-12-14 mm implants
- Narrow/Standard/Wide Neck Collars available
- A depth gauge for bone level implants is available for 3.5 , 4.1 and 4.8 mm platform diameter implants

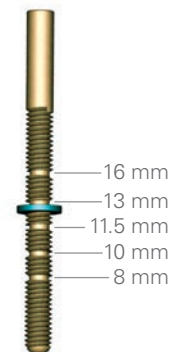
Verban Depth Gauges		
Product	Part no.	Price
Depth Gauge – 2.2 Probe	EVM11725	\$92.00
Depth Gauge – 3.5 Collar	EVM11726	\$52.00
Depth Gauge – 4.8 Collar	EVM11724	\$52.00
Depth Gauge – 6.5 Collar	EVM11727	\$52.00



2.2 mm Depth Gauge with 4.8 mm Collar

NEW!

Verban Bone Level Depth Gauges		
Product	Part no.	Price
Depth Gauge – 2.2 Probe	EVM1128	\$92.00
Depth Gauge – 3.5 Collar	EVM1129	\$52.00
Depth Gauge – 4.1 Collar	EVM1130	\$52.00



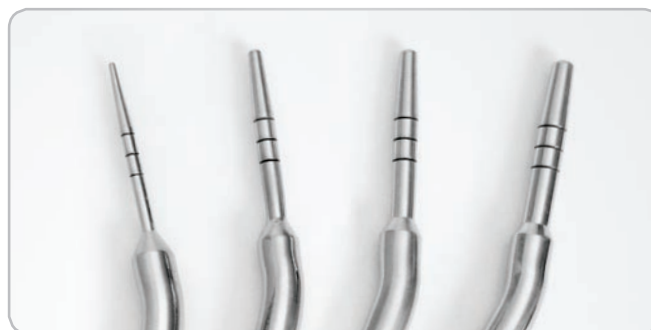
2.2 mm Depth Gauge with 3.5 mm Collar

NEW!

Angled Osteotomes

Specifically designed for the Replace Select System

Only OTA has angled osteotomes with diameters that correspond to the Nobel Biocare Replace Select System. When working in soft bone in the posterior maxilla, angled osteotomes are much easier to use than conventional straight osteotomes. Our set of four osteotomes also includes an autoclavable tray.



OTA951 Osteotomes for Replace Select System
Set of 4 \$650

Individual Instrument \$175 each

OSTRS2.0

OSTRS3.5

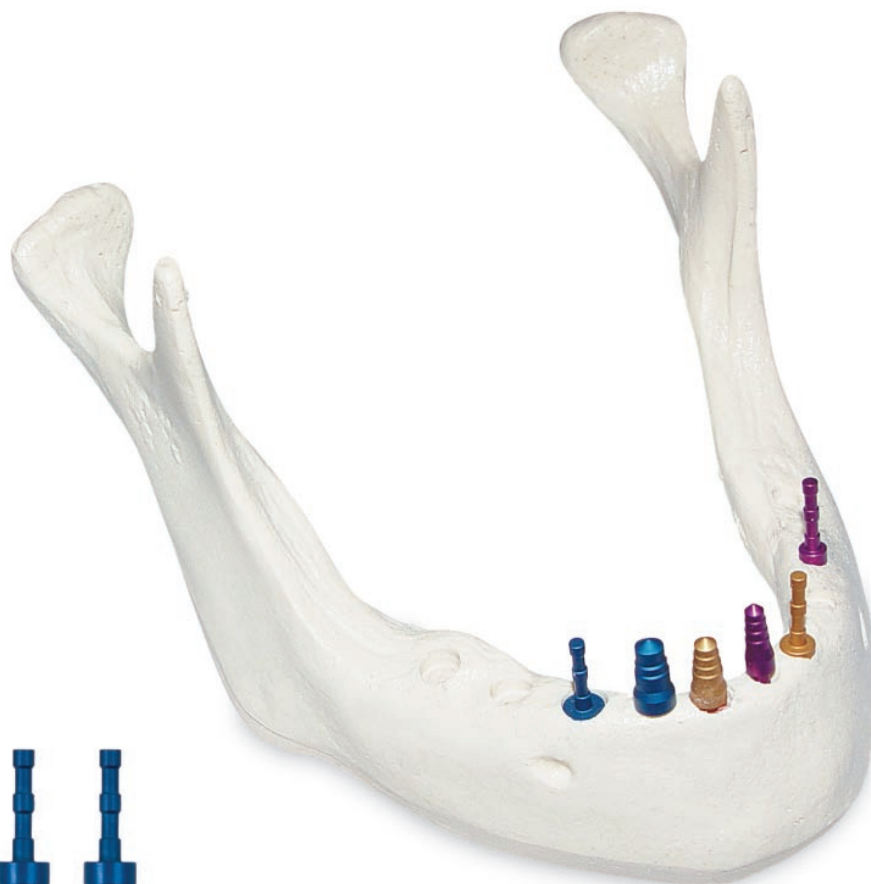
OSTRS4.3

OSTRS5.0

Surgical Guide Pins

Specifically designed for the Replace Select System

Not available from Nobel Biocare, our surgical guide pins are an excellent way to avoid implant crowding and achieve precise paralleling with the Replace Select System. Guide pins are color-coded by diameter and sold in sets of six.



OTA134 Guide Pins for Replace Select System
Set of 6 (2 of each size) 3.5, 4.3, 5.0 \$150

Anthogyr Motor Console

The perfect assistant for your surgery procedures

Simple and powerful, the new Implanteo® LED motor is a necessary partner for all your surgical procedures. The large, color, touch-screen display is simple to navigate and will make everyday procedures more comfortable. During the surgery, the critical data (speed, torque in N-cm,) is constantly displayed in real-time and can be saved on a USB key and tracked in the patient records.

It is a powerful and practical motor that conforms to the highest maintenance and sterilization standards. The LED technology provides optimal light for visibility that any dental practitioner will appreciate.

FEATURES

LED Technology lighting

- Optimum visibility – Natural light quality equivalent (6,500°K)
- Illumination field wider than classical lighting
- Resistance and durability of the LED component
- Adjustable power – up to 31,000 LUX

Large, color, touch-screen allowing for easy viewing of critical data

- Intuitive navigation system with descriptive icons
- High visibility thanks to the 5.7 inch screen
- High number of useful applications for easy navigation

Intelligence

- Live readout of important data (torque in N-cm, speed)
- Real-time graphics display of critical data
- Patient record tracking: data saving on USB memory key
- 10 easily configurable programs and up to 10 sequences per program.

Power and precision

- High torque output and greater speed control
- Contra-Angle Calibration – the precision of the motor is adapted to the contra-angle used



Compact pedal with transporting handle

OTA10000 Anthogyr Motor Console \$4,950
(Includes Mont Blanc™ Handpiece)

Blocks pain from injections

VibraJect® blocks pain from injections based on the Gate Control Theory. The battery operated motor attaches to a conventional syringe causing the needle to vibrate. The high frequency vibration of the needle stimulates the nerve ending and blocks the transmission of pain feelings to the brain.

VibraJect® is effective for all types of injections including intraligamental, palatal and blocks. It is an easy and affordable way to simplify injections and improve the patient's dental experience.

The use of a topical anesthetic is not necessary when using VibraJect®. The clinician attaches the clip bracket and motor to a conventional syringe and turns the motor on by twisting the knob on top of the motor. A normal injection technique is used. The clip bracket can be left attached to the syringe during autoclaving. The motor is easily removed from the clip bracket prior to autoclaving and can be wiped off with alcohol or other surface disinfectants.

VibraJect® Comes in two models: VJ2002 Standard Kit with replaceable 1.5 volt batteries and the VJR3R Rechargeable Kit containing two rechargeable batteries and recharging unit. Both models function identically and use the same autoclavable clip brackets. The VJR3R Kit is recommended for clinicians performing more than 50 injections per week to save the cost of replacement batteries.



NEW!



OTAVJ2002 VibraJect Kit with 1.5 volt Batteries \$289

OTAVJR3R VibraJect R3 Kit with Recharging Unit \$359

Manual and Universal Connect Implant Drivers

The CM hand torque implant driver

This unique set of implant drivers allows the clinician to precisely place the implant fixture in the esthetic zone. The tactile sense derived from the placement of the implant with this device will assure the practitioner of the correct torque of the implant in addition to the control of the direction and position of the implant. The CM driver allows the surgeon to change the position of the implant during placement to meet the unique needs of the patient's soft tissue and bony anatomy.

With more emphasis placed on immediate placement, immediate loading and the correct stability of the implant fixture this convenient instrument will enhance the predictability of the implant placement process and position. With variable torque drivers (35, 45, 65 Ncm) the stability of the implant can be measured at the time of placement and preclude the need for additional instrumentation.

The straight and angled drivers offer a full array of options needed for placement of the implant fixture. The instrument is generic and will connect with all major implant systems utilizing its universal adapter. No clinical practice that places implants should be without a set of these drivers.



Manual Implant Driver
Right Angled



Torque Adapter



Square to Latch Adapter

Torque Adapters \$150 each

OTA605 (15Ncm)

OTA606 (25Ncm)

OTA607 (35Ncm)

OTA608 (45Ncm)

OTA610 (65Ncm)

OTALA Square to Latch Adapter \$50



Manual Implant Driver
Straight



Implant Driver
Tactile

MANUAL IMPLANT DRIVER:

OTA600 \$1,000

Right Angled with 35Ncm, 45Ncm,
Square to Latch Adapter

OTA601 \$1,000

Straight with 35Ncm, 45Ncm,
Square to Latch Adapter

OTA602 Implant Driver, Tactile \$850

Individual Bits \$75 each

Bits work in the manual drivers
and the handles.



Square Bits			Short	Medium	Long
■	Straight Screwdriver, wide	Straight Systems NEW!	OTA728	N/A	OTA729
—	Straight Screwdriver	Straight Systems	OTA703	OTA704	OTA705
★	SCS Screwdriver	Straumann	OTA706	OTA707	OTA708
★	UniGrip Driver	Replace Select	OTA709	OTA710	OTA711
⬡	Hex 1.3mm/.050 inch	Lifecore, Biohorizons, Astra, Zimmer	OTA712	OTA713	OTA714
⬡	Hex 1.2mm/.048 inch	3i System	OTA715	OTA716	OTA717
⬡	Hex 0.9mm/.035 inch	Friadent, Ankylos, 3i Cover Screw	OTA718	OTA719	OTA720
■	Square 1.3mm/.050 inch	Gold Screw/Nobel Biocare	OTA721	OTA722	OTA723

Mix 'n Match Universal Drivers

Build your own kit!

OTA's Mix 'n Match Universal Driver System gives the clinician instant access to any area of the mouth for any implant system! Eliminates the chaos in your practice by reducing the number of different driver systems in your practice.

With 3 different length bits, short, medium and long, there is no longer a problem with accessing the area needing to be restored.



Square Bits				Short	Medium	Long
■	Straight Screwdriver, wide	Straight Systems	NEW!	OTA728	N/A	OTA729
—	Straight Screwdriver	Straight Systems		OTA703	OTA704	OTA705
★	SCS Screwdriver	Straumann		OTA706	OTA707	OTA708
★	UniGrip Driver	Replace Select		OTA709	OTA710	OTA711
⬡	Hex 1.3mm/.050 inch	Lifecore, Biohorizons, Astra, Zimmer		OTA712	OTA713	OTA714
⬡	Hex 1.2mm/.048 inch	3i System		OTA715	OTA716	OTA717
⬡	Hex 0.9mm/.035 inch	Friadent, Ankylos, 3i Cover Screw		OTA718	OTA719	OTA720
■	Square 1.3mm/.050 inch	Gold Screw/Nobel Biocare		OTA721	OTA722	OTA723



OTA724 Handle, Long Square \$100

OTA725 Handle, Short Square \$100

Individual Bits \$75 each

Bits work in the manual drivers and the handles

BOX FOR BITS:

OTA700 Box for 21 Bits \$125

OTA701 Box for 9 Bits \$75

OTA702 Box for 3 Bits \$50

The Capsule Delivery Instruments

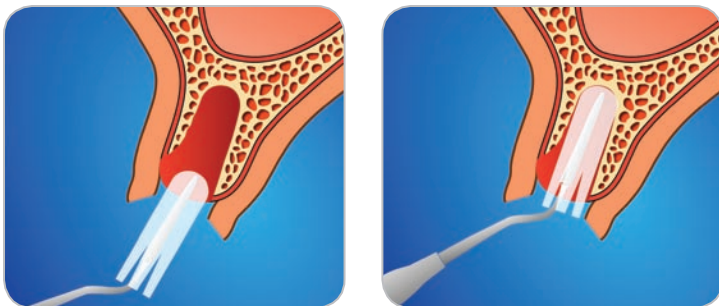
Collagen placement Instruments

With our new Socket and Sinus Capsules now being marketed by Zimmer Dental, these variable shaped instruments allow the clinician to place, position and manipulate the collagen capsules. Whether they are being positioned in the sinus for graft containment or in a tooth socket post extraction for grafting, the capsule can be easily handled with these special instruments.

Each hand instrument comes with a dual set of condensers with variable shaped ends allowing for the management of narrow or wide spaces.

CDI01 Capsule Delivery Instrument, Thin \$150

CDI02 Capsule Delivery Instrument, Thick \$150



Collagen Capsule delivered by Capsule Delivery Instruments



CDI01 Thin

CDI02 Thick

Cutting Scissors

Sharp, heavy duty yet small, our scissors can cut some of the hardest materials. Ideal for cutting collagen products.

OTA410-1 Cutting Scissors, Straight \$150

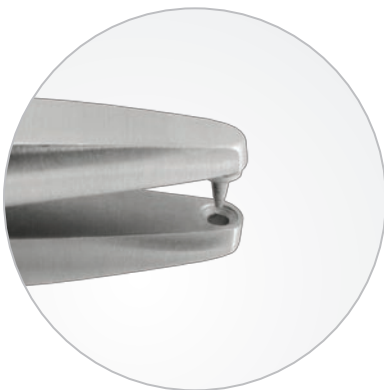
OTA410-2 Cutting Scissors, Angled \$150



OTA Hole Punch

Ideal for pre-punching holes in collagen that you will be fixating at the end of your procedure.

OTA412 Hole Punch \$150



Placement Instrument

OTA Curette

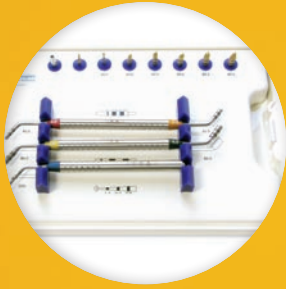
Our OTA placement Curette features one end with two short yet sharp prongs ideal for working with collagen placement, and the other end can be used in a variety of ways and many procedures.

OTA411 Curette \$150



NEW!

SINUS LIFT SURGERY



Balloon for Sinus Lifts

If you can inflate a balloon, you can perform a sinus lift

Looking for the secret to perfect sinus lifts? Try the OTA Balloon for Sinus Lifts (BSL). These unique balloons make it easy to perform an atraumatic membrane elevation. All you have to do is remember this simple formula while inflating the balloon with the syringe: 1cc of saline equals 6mm of membrane elevation.

It couldn't be any easier! This innovative product gives predictable results, decreases surgical time and minimizes the possibility of membrane tears. A typical single-tooth or multi-tooth procedure that generally takes 30 to 45 minutes will probably take 10 to 15 minutes with the BSL.

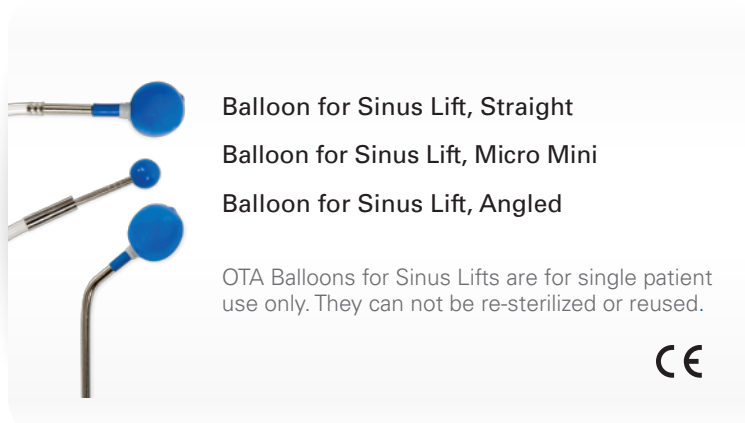
Graft material required is in direct proportion to the amount of fluid used to inflate the balloon: 1cc of fluid will require 1cc of graft material.

Three different configurations are available. The straight BSL features a 3.1mm diameter shaft and has approximately 4cc capacity. It is typically used for the osteotome, socket or closed technique through an extraction site.

The angled BSL also has a 3.1mm shaft and approximately 4cc capacity. It is designed for an antral approach using the Caldwell-Luc window or open technique.

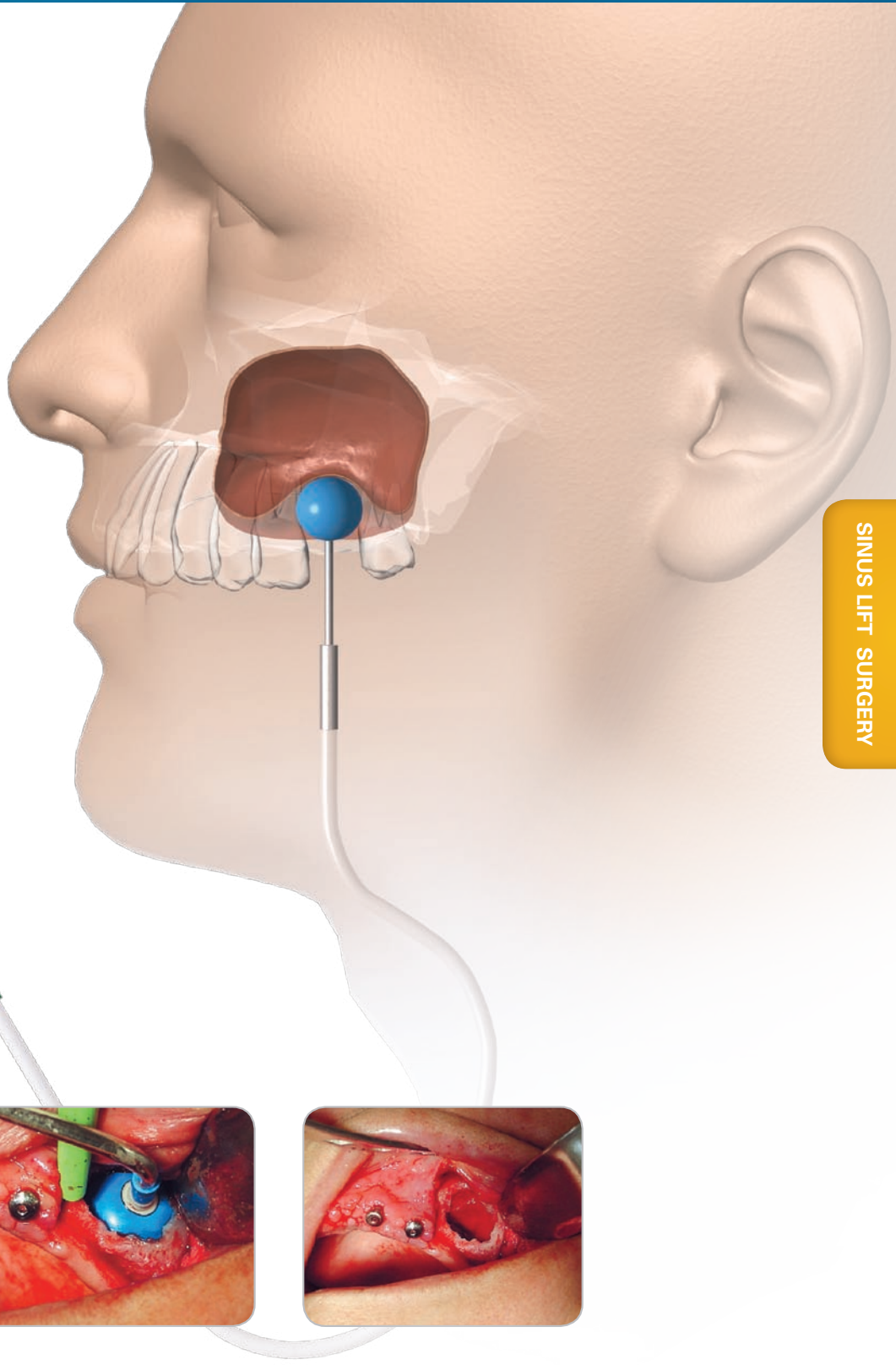
The micro-mini BSL has a 1.9mm shaft and has approximately 1.5cc capacity. It is typically used for entry through the implant osteotomy site when placing a small diameter implant.

Balloon for Sinus Lift can also be used to deliver our Sinus Capsules.

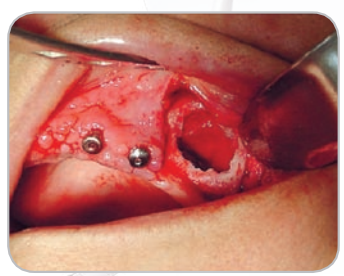
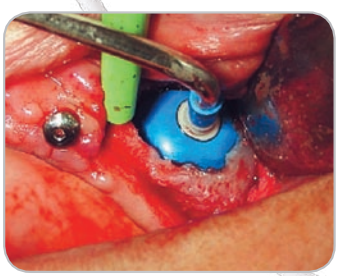
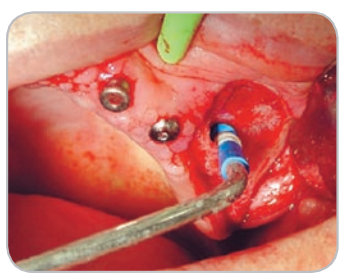


Exclusively distributed by





SINUS LIFT SURGERY



Sinus Lift Kits

RCSLK

Developed by Dr. Ronald Cardoso, our newest Sinus lift Kit, the RCSLK, includes 5 Instruments arranged in a surgical tray. Each instrument is numbered and each side of the instrument is labeled "A" or "B". Our Instruments are unique and can be used in a number of different ways.



NEW!

RCSLK Sinus Lift Kit \$850
Set of 5 instruments

Individual Instrument \$200 each
#1RC, #2RC, #3RC, #4RC, #5RC

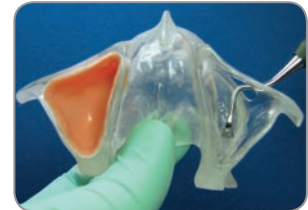
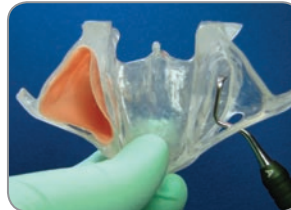
- #1 It can be used to fracture the lateral window as well as fracture the sinus floor (Sommer's Technique). It can also be used as a depth gauge and to compact graft material through the alveolar or window.



- #2 It is used for the left and right Maxillary sinus initial detachment. The inclusion of a manual Piezo-type instrument gives you the ability to detach the Schneiderian membrane with side "A" for use around the windows edges and to elevate the membrane with side "B".



- #3 It is for use in the Large Sinus with side "A" for use in the Right Maxillary sinus medial and anterior walls. Side "B" is intended to be used in the Right Maxillary Sinus for the posterior sinus floor and anterior walls.



- #4 It is used to extend the release of the schneiderian membrane further into a small sinus cavity through a lateral window. The head of the tool is flat and oblong in shape. The shaft of the tool has a single bend (angle) allowing for close access to the medial and lateral wall.



- #5 Side "A" is used in the Maxillary Sinus, both left and right, to carry graft material into the sinus. Side "B" is the graft packer.



ZM Advanced Kit designed by Dr. Ziv Mazor

Sinus lift procedures are much easier to perform when you have the right instrumentation. Our ZM Advanced Kit includes instrumentation that isn't available anywhere else.

The 45° angle of the #1 instrument is designed to reflect the Distal and Mesial portion of the Schneiderian Membrane. Should you need a more acute angle—90° for example—the perfect instrument is the #2. With both instruments, you can use a large (long tip) or narrow sinus (short tip) instrument.

The #2 and #4 instruments are designed to reflect the upper and lower part of the sinus window. The #2 is for a large sinus and #4 for a small sinus.

Instrument #5 is used to carry and condense a large amount of bone substitute. The #6 instrument will also condense bone substitute and is usually the choice of doctors who prefer a smaller instrument or a ball condenser.

Instrument #7 is a depth marker for you to check the depth of an implant placed into the sinus. One end is 2mm in diameter—used for checking after the first drill—and the other end is 3mm in diameter. Laser marks are at depths of 8, 10, 11.5, 13 and 15mm.





ZM Advanced Sinus Instruments are color-coded and include an autoclavable tray when you buy a complete kit. Individual ZM instruments are also available.

ZM Advanced Sinus Lift Kit \$925
Set of 7 instruments

Individual ZM Instruments \$150 each
ZM1, ZM2, ZM3, ZM4, ZM5, ZM6, ZM7

OTA Standard Sinus Lift Kit

Our standard Sinus Lift Kit is an outstanding value. The edges of the instruments are polished for safety and offer great tactile feel. The kit contains ten color-coded instruments with working ends on both sides. The working ends are different in angle and size and also feature a variety of shapes such as elevators, cones, pears or balls. An autoclavable tray is included when you buy a complete kit. Individual instruments are also available.



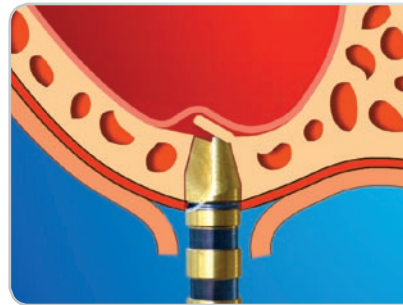
SLK Sinus Lift Kit \$850
Set of 10 instruments

Individual Sinus Lift Instrument \$95 each
OTA1, OTA2, OTA3, OTA4, OTA5, OTA6,
OTA7, OTA8, OTA9, OTA10

Hatch Reamer Set

Safer and easier sinus lifting

- Minimally Invasive Surgery
- Highly Predictable
- Minimal Operating Time
- No Need for Osteotome/Malleting
- Minimal Post-operative Swelling



Innovative design allows "hatched" lifting of the cortical bone of the sinus floor with minimal chance of damaging sinus membrane.



OTA111-1 Hatch Reamer Set \$1,500

BIOLOGICS



OTA Collagen Biomaterial



OTA Collagen Biomaterial is an off-white, biocompatible, resorbable membrane engineered from highly purified type I collagen derived from bovine Achilles tendon. When moistened with saline or blood, the porous material is flexible and conforms to the contours of the defect site. The material is easily cut with scissors or scalpel to meet the needs of the surgeon. OTA Collagen Biomaterial is provided sterile for single use only.

Exclusively distributed by



Intended Use

OTA Collagen Biomaterial is intended for use in dental surgical procedures as a resorbable material for placement in the area of dental implants, bone defects or ridge reconstruction.

Features

- Provides containment of any type of graft material (i.e., bone, synthetic) so that it will not migrate from the placement site.
- Repairs acute tears by forming a reinforced tissue composite.
- Available in a variety of configurations for virtually every application related to pre-prosthetic and bone reconstructive surgery.
- Resorbs as connective tissue grows into and through the collagen.
- Maintains its shape and stiffness when dry, yet its stiffness can be adjusted by wetting with blood or saline.
- Can be cut into an infinite number of sizes and shapes.

Available Forms

- Socket Capsule
- Sinus Capsule
- Wedge
- CurV™

Preshaped Collagen Membrane

Contains Graft Materials to Prevent Migration

OTA collagen biomaterial holds graft materials exactly where the clinician wants bone to form. The collagen prevents migration or movement of the graft materials, including autograft, allograft, synthetics or combination, to maximize new bone formation within and around the graft materials.

Repairs Tissue Tears

OTA collagen biomaterial is sufficiently strong to seal acute tissue tears or encourage tissue repair by integrating with the tissue.

Infinite Variety of Shapes and Sizes

OTA collagen biomaterials are available in a wide variety of shapes and sizes. The clinician may choose the hollow capsule version for concentric spaces like extraction sockets or drill holes, or a curved version to accommodate ridge augmentation procedures. Another version has a wedge profile, providing thicker membrane for tacking into place.

Resorbs and Remodels Naturally

After having served the function of retaining the graft materials, OTA collagen biomaterials resorb in response to tissue healing. The components are broken down by the body's natural metabolism and excreted or biologically recycled.

Adjustable Stiffness to Match Function

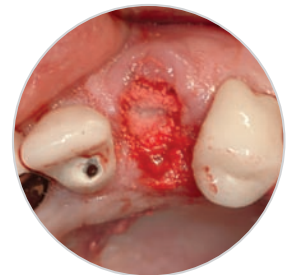
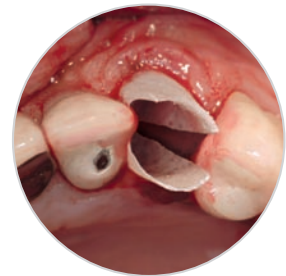
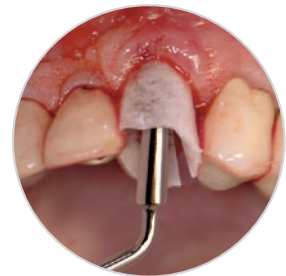
OTA collagen biomaterials are sufficiently stiff when dry to hold their shapes. The surgeon can hydrate the collagen with saline or blood to decrease its stiffness without loss of shape or strength.

Shapeable

OTA collagen biomaterials can be cut to virtually any shape necessary. Shaping to size is easily achieved, wet or dry, using scissors or scalpel.

Biocompatible and Safe

OTA collagen biomaterial is composed exclusively of highly purified, type 1, bovine collagen. Bovine collagen is recognized to be extremely biocompatible and safe, being also the principle component material for a variety of critical devices, e.g., heart valves, vascular grafts.



OTA Collagen Biomaterial

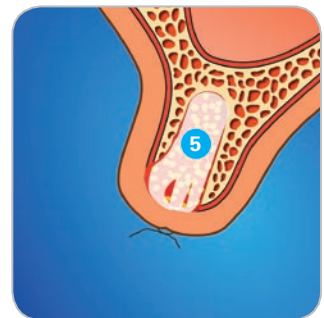
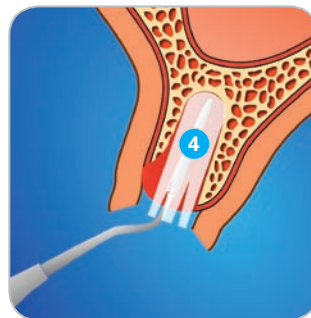
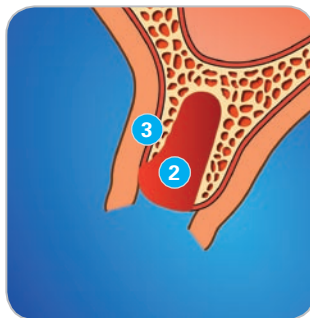
Socket Capsule – Site Preservation via Socket Approach

- Can be easily trimmed during surgery for a custom fit
- Can be wetted with saline or blood from the local site
- Resorbs as connective tissue grows into and through the collagen
- Provides containment of graft material in its intended position
- Immediately after tooth extraction for site preservation
- Regenerate deficient or fractured labial/buccal plate after tooth extraction
- Approximately 7 mm diameter



OTA Collagen Biomaterial

Exclusively distributed by



- 1 Tooth with thin labial/buccal plate
- 2 Empty socket
- 3 Fractured and incomplete labial/buccal plate
- 4 Surgeon cut and shaped Socket Capsule, delivered by Sinus Delivery Instruments
- 5 Bone graft and sutures applied

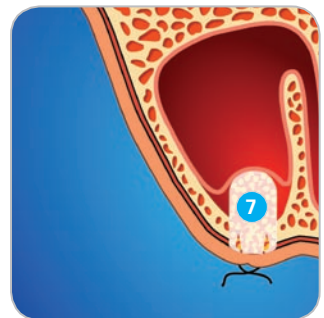
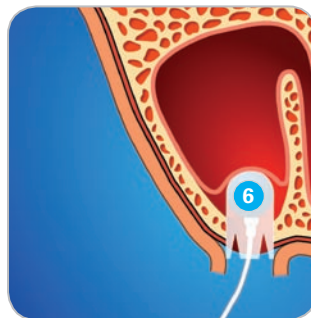
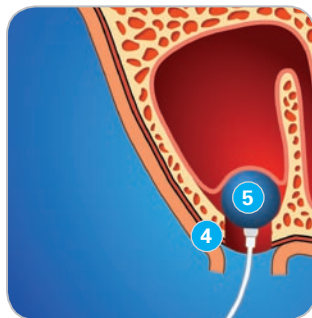
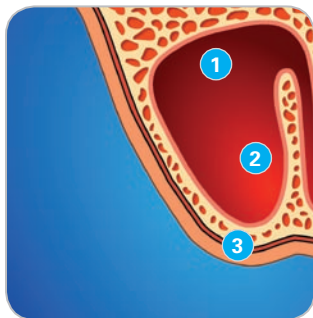
Sinus Capsule – Maxillary Sinus Elevation via Crestal Entry

- Various sizes for socket or sinus approach
- Can be wetted with saline or blood from the local site
- Can be easily trimmed during surgery for a custom fit
- Repair tears in sinus membrane
- Wound healing
- Reinforce soft tissues
- Retains bone graft materials in its intended position
- Available in two sizes:
 - medium – approximately 11 mm diameter
 - large – approximately 16 mm diameter



OTA Collagen Biomaterial

Exclusively distributed by



- 1 Maxillary Sinus
- 2 Schneiderian Membrane
- 3 Alveolar Ridge
- 4 Crestal incision
- 5 Balloon for Sinus Lifts
- 6 Surgeon cut and shaped Sinus Capsule, delivered by Balloon for Sinus Lifts
- 7 Bone graft and sutures applied

OTA Collagen Biomaterial

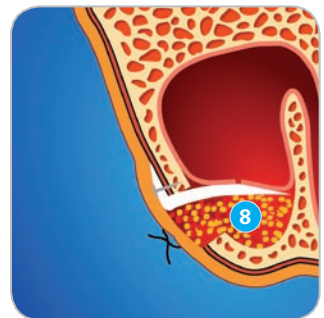
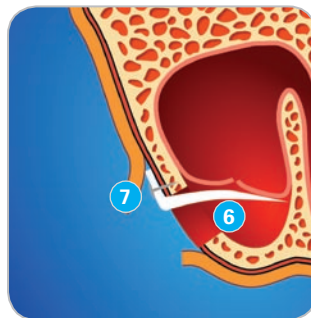
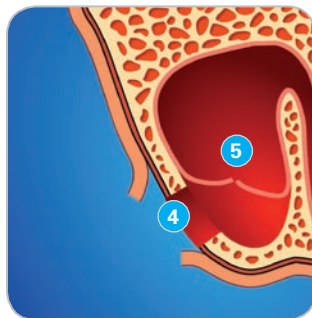
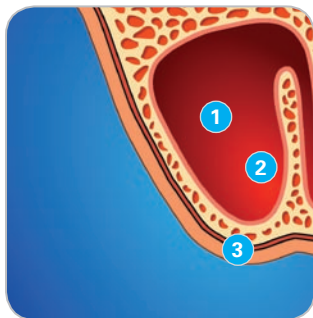
Wedge – Caldwell-Luc Sinus Lift

- Thicker reinforced edge for attachment to lateral wall bone with tacks
- Can be wetted with saline or blood from the local site
- Can be easily trimmed during surgery for a custom fit
- Repair tears in sinus membrane
- Wound healing
- Creates new sinus floor during major tears
- Approximately 23 mm x 38 mm



OTA Collagen Biomaterial

Exclusively distributed by



- 1 Maxillary Sinus
- 2 Schneiderian Membrane
- 3 Alveolar Ridge
- 4 Lateral Osteotomy
- 5 Tear in Schneiderian Membrane
- 6 Surgeon cut and shaped Wedge
- 7 Bone tack
- 8 Bone graft and sutures applied

Zimmer CurV™ Preshaped Collagen Membrane – Posterior

- The Zimmer CurV™ Posterior form of the collagen products is longer on one side to facilitate attachment of the material to bone using appropriate fixation.
- Can be used dry or hydrated
- The Zimmer CurV™ product can be used to assist in the achievement of vertical bone formation.
- Used in place of titanium mesh
- Approximate dimensions: 30 mm W x 33 mm L



OTA Collagen Biomaterial

Exclusively distributed by



NEW!



- 1 Bone loss
- 2 Incision, open
- 3 Surgeon cut Posterior CurV filled with bone graft
- 4 Fixation (i.e. tacks, screws or any appropriate fixation)
- 5 Sutures applied

BIOLOGICS

OTA Collagen Biomaterial

Zimmer CurV™ Preshaped Collagen Membrane – Anterior

- Can be used dry or hydrated
- The Zimmer CurV™ product can be used to assist in the achievement of vertical bone formation.
- Contoured to match anterior dental anatomy
- Approximate dimensions: 35 mm W (tapered) x 45 mm L



OTA Collagen Biomaterial

Exclusively distributed by



NEW!



- 1 Bone loss
- 2 Incision, open
- 3 Surgeon cut Anterior CurV filled with bone graft
- 4 Fixation (i.e. tacks, screws or any appropriate fixation)
- 5 Sutures applied

Resorbable Collagen Biomaterial

Resorbable Collagen Plug, Foam and Tape

OTAPlug, OTAfoam and OTATape are absorbable collagen wound dressing products intended to assist in the wound healing process.

- Pliable, highly absorbent and very porous
- Provide a three-dimensional matrix for additional strengthening of the blood clot
- Produced using one of the purest sources of bovine collagen commercially available
- Easy to apply



OTAPlug

- Ideal for extraction sockets
- Aids in the closure of extraction sites
- Control bleeding in biopsy sites

OTAfoam

- Provides an excellent matrix to assist in wound healing
- Used in palatal donor sites
- Controls bleeding due to the hemostatic nature of collagen

OTATape

- Ideal for applications in minor oral wounds
- Aids in the closure of graft sites
- Used to help repair the Schneiderian Membrane

Resorbable Collagen Biomaterial	Size	Part no.	Price
OTAPlug, Sterile 10/box	3/8" x 3/4"	OTA62-202	\$150
	1 cm x 2 cm	OTA509-4000	\$175
OTAfoam, Sterile 10/box	3/4" x 1.5"	OTA62-201	\$150
	2 cm x 4 cm, 3 mm thick	OTA509-2000	\$175
OTATape, Sterile 10/box	1" x 3"	OTA62-200	\$150
	2.5 cm x 7.5 cm, 1 mm thick	OTA509-1000	\$175

Osteokor Allografts

The naturally osteoconductive autograft substitute

Allograft cancellous bone is an ideal alternative to autograft for quick, complete bone regeneration. Cancellous chips and granules form the osteoconductive scaffold for new bone formation while maintaining the porosity essential for tissue and vascular regrowth.

Osteokor is used where space maintenance and volume enhancement is essential and is indicated for: socket grafting, ridge augmentation, sinus augmentation, and periodontal defects.



NEW!

Description	Unit	Part no.	Price
Osteokor Cort DBM 250-1000 microns	0.5 cc	DIS-CD05	\$72
Osteokor Canc Allograft 250 – 1000 microns	0.5 cc	DIS-CA05	\$72
	1.0 cc	DIS-CA1	\$92
	2.0 cc	DIS-CA2	\$154
Osteokor Canc Allograft 250 – 1000 microns	0.5 cc	DIS-CC05	\$72
	1.0 cc	DIS-CC1	\$92
	2.0 cc	DIS-CC2	\$154
	5.0 cc	DIS-CC5	\$296

algisorb™ – formerly known as C-Graft

Your alternative to autogenous bone

An attractive alternative to autogenous bone, allografts, and xenografts for preserving and grafting alveolar bone, algisorb™ (formerly known as C-Graft™ or Algipore™) is a completely natural bone-grafting material derived from the skeleton of marine algae, a renewable plant harvested off the coasts of South Africa and England. When dried and processed according to strict Food and Drug Administration (FDA) guidelines and Good Manufacturing Procedures, the harvested algae is transformed into calcium phosphate, which can provide osteoconductive scaffolding for bone regeneration in grafting procedures.

According to Boyd Tomasetti, DMD, Assistant Clinical Professor at the University of Colorado School of Dentistry, a board certified oral/maxillofacial surgeon, and past president of the American Association of Oral and Maxillofacial Surgeons and the Colorado Society of Oral and Maxillofacial Surgeons, the processing of the algae eliminates any type of contamination or proteins present in the plant form, making the finished product completely safe for human implantation. "The clinical applications of C-Graft™ relate to dental implant surgery specifically," Tomasetti explains. "I have begun using C-Graft™ almost exclusively in my practice. It certainly has been shown to be superior to bovine-derived materials and, as an oral surgeon, I have found it to be an excellent alternative to autogenous bone."



OTA501 algisorb™ .5ml vial \$80

OTA502 algisorb™ 1ml vial \$125

OTA503 algisorb™ 2ml vial \$195

For faster and steadier new bone-formation

- Highly pure tricalcium phosphate
- Excellent Bio-compatibility
- Better resorbability
- Allows for easier mixing with blood
- Suitable scaffold for cell proliferation

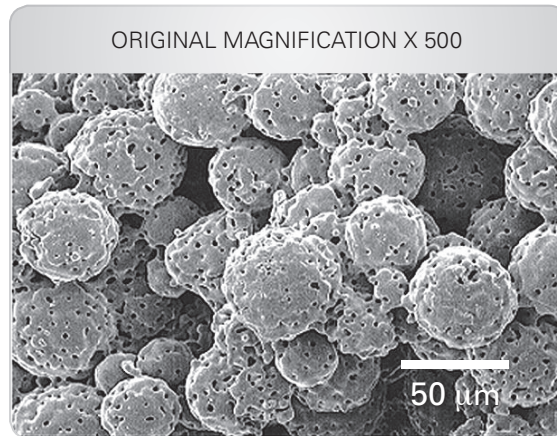
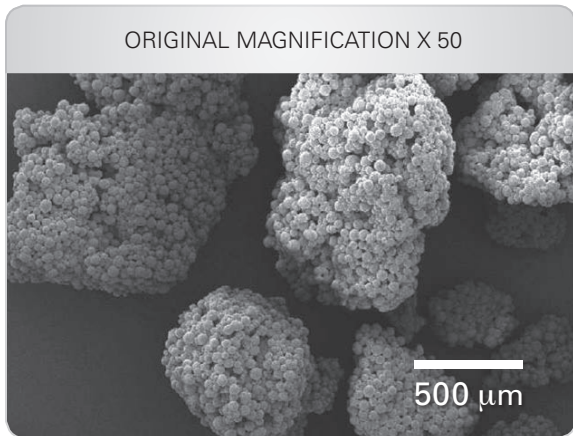
OTA Premier TCP's unique osteoconductive granule structure with open micro and macro pores allows faster replacement by newly formed autogenous bone.



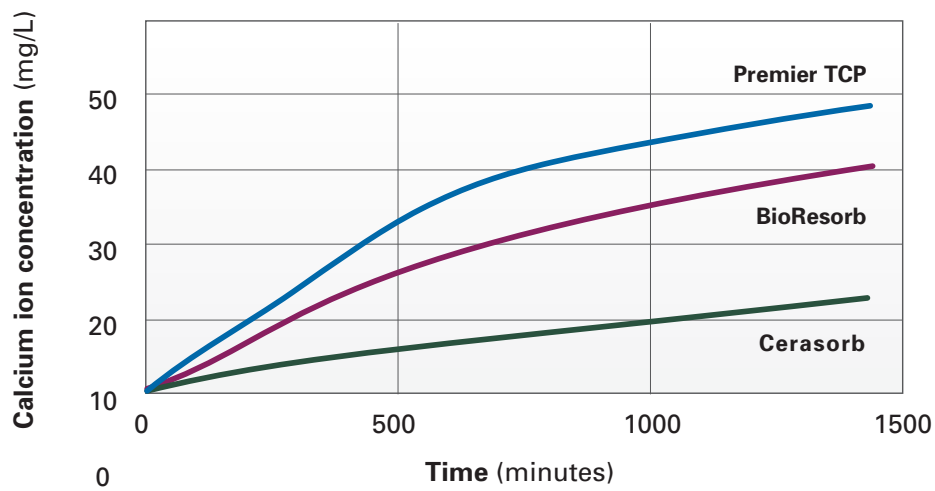
NEW!

OTA150 PremierTCP \$70
.5g bone grafting material

SEM image of a granule



Comparison of Dissolution Speed



(The test was conducted at Chemsultants, Inc, USA)

Instrumentation for Collagen Delivery

The Capsule Delivery Instruments

With our new Socket and Sinus Capsules now being marketed by Zimmer Dental, these variable shaped instruments allow the clinician to place, position and manipulate the collagen capsules. Whether they are being positioned in the sinus for graft containment or in a tooth socket post extraction for grafting, the capsule can be easily handled with these special instruments.

Each hand instrument comes with a dual set of condensers with variable shaped ends allowing for the management of narrow or wide spaces.

See page 24 for more details.



Cutting Scissors

Sharp, heavy duty yet small, our scissors can cut some or the hardest materials. Ideal for cutting collagen products.

See page 25 for more details.

OTA Hole Punch

Ideal for pre-punching holes in collagen that you will be fixating at the end of your procedure.

See page 25 for more details.



OTA Curette

Our OTA placement Curette features one end with two short yet sharp prongs ideal for working with collagen placement, and the other end can be used in a variety of ways and many procedures.

See page 26 for more details.



RESTORING IMPLANTS



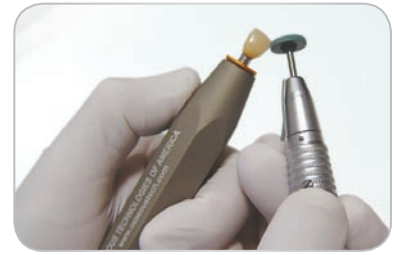
Universal Analog Holder

No more burned fingers or dropped or flying analogs

Here's the easy way to hold an analog while prepping: use our versatile analog holder. Designed by Ruben Chilingaryan, it reduces the risk of burning your fingers, losing an analog or having it fly out of your hand.

The OTA analog holder works with analogs from any implant system. The holder includes three color-coded chucks. The red chuck holds 1.5mm to 3.0mm analogs, the gold chuck holds 3.0mm to 4.5mm analogs, and the green chuck holds 4.5mm to 6.5mm analogs.

The Universal Analog holder makes a great gift and can be custom laser-etched with your name or personal message in quantities of 20 or more.



OTA136 Universal Analog Holder \$125



Customization available

Crown Puller

Safe and easy to use for crown removal

OTA Crown Pullers are made of stainless steel and are supplied with replacement pads and emery powder.



OTA140 Crown Puller \$225
Including 10g of emery powder and 20 replacement pads

OTA133 Replacement Pads \$30.99
Pack of 20 each

Universal Torque Wrench

Torq Control – Secure Tightening

Optimise the tightening of your prosthetic constructions in total safety

The success of the implant treatment depends on the precise tightening of the parts placed directly on the implant. A pre-stressed tightening of the screw will help avoid any risk of screw loosening. Also, high tightening torques may lead to screw fracture.

A calibrated tightening can only be guaranteed through the use of a precision instrument offering a torque control system. The dynamometrical manual wrench Torq Control® has been specially designed by Anthogyr to meet those requirements.

FEATURES

- **Universal Torque Wrench** – Recommended with any type of implants.
- **High Precision** – Perfect control of torque with 7 torques values: 10/15/20/25/30/32/35N.cm
- **Optimum Security** – Automatic declutching prevents the screw from loosening and fracture.
- **Ergonomic Design** – Lightweight (only 135g) for a better freedom of movement. 100° angulated micro-head provides optimized access in mouth (posterior areas).
- **Easy Maintenance** – One piece design with smooth surface limits bacterial retention. It can withstand sterilisation (in an autoclave at 135°C).
- **Reliability** – High precision design and manufacturing.



OTA15500 Universal Torque Wrench \$850

3 EASY AND SIMPLE STEPS



Select the recommended torque



Screwing



The screw automatically stops when the selected torque is reached

Adjustable Torque Wrench

The fully adjustable precision torque wrench

The Adjustable Torque Wrench has been designed with 9 distinct torque settings. A simple twist of the handle locks in precision-engineered torque values guaranteeing accuracy and repeatability.

Tightening with the correct torque minimizes the risk of the implant screw working loose and improves precision during bridge fabrication. Exact torque control also reduces the risk for stress being built into the restoration and prevents component fractures.

FEATURES

- Autoclavable
- No lubrication
- Ratchet mechanism

9 Torque settings (15, 20, 25, 30, 35, 40, 45, 50 and 60 Ncm)

- Torque settings lock into select location for accuracy and repeatability
- Ratchet clutch disengages (slips) when torque is applied to avoid over torquing
- Torque settings are provided for use with all implant designs
- Wrench head accepts the standard 4mm square connection



NEW!

OTAATW Adjustable Torque Wrench \$425
Individual Bits \$75 each

Square Bits		Short	Medium	Long
■	Straight Screwdriver, wide Straight Systems NEW!	OTA728	N/A	OTA729
—	Straight Screwdriver Straight Systems	OTA703	OTA704	OTA705
★	SCS Screwdriver Straumann	OTA706	OTA707	OTA708
★	UniGrip Driver Replace Select	OTA709	OTA710	OTA711
⬡	Hex 1.3mm/.050 inch Lifecore, Biohorizons, Astra, Zimmer	OTA712	OTA713	OTA714
⬡	Hex 1.2mm/.048 inch 3i System	OTA715	OTA716	OTA717
⬡	Hex 0.9mm/.035 inch Friadent, Ankylos, 3i Cover Screw	OTA718	OTA719	OTA720
■	Square 1.3mm/.050 inch Gold Screw/Nobel Biocare	OTA721	OTA722	OTA723

Right-Angled Driver

A high-performance driver without the high price

Our right-angled driver makes it easy to place posterior screws in the mandible or maxilla. Because it's manually driven, there's no need to connect it to a handpiece. For maximum access and comfort, you can rotate the head to the exact angle you need. Most other drivers are fixed at a single angle, which makes them awkward to use. When you need a specific torque value, simply attach the appropriate pre-set torque adapter.

The OTA right-angled driver is priced hundreds of dollars less than competitive units. Torque Adapters are sold separately.

OTARAD Right Angled Driver, No Torque \$350

Torque Adapters \$150 each

TA15 (15Ncm), TA20 (20Ncm), TA25 (25Ncm), TA35 (35Ncm), TA45 (45Ncm)

Torque adapters must be cold sterilized.



Customization available

Bits for Right-Angled Drivers

Compatible with all major implant systems

Use these bits with our right-angled driver or any standard latch-type contra-angle system. They're ideal for posterior abutments and cover screws in the mandible and maxilla.

Stop wasting time or rescheduling appointments because you have to identify what type of implant system was placed in a patient by another dentist. With these bits you'll have what you need for 95% of the systems sold in the United States. Each bit is laser etched for quick identification.



OTABITS Bits for Right-Angled Drivers
Set of 7 \$300

Individual Bits \$75

	Latch-type Bits	Part no.
—	Straight Screwdriver Straight Systems	BIT1
★	SCS Screwdriver Straumann	BIT2
★	UniGrip Driver Replace Select	BIT3
⬡	Hex 1.3mm/.050 inch Lifecore, Biohorizons, Astra, Zimmer	BIT4
⬡	Hex 1.2mm/.048 inch 3i System	BIT5
⬡	Hex 0.9mm/.035 inch Friadent, Ankylos, 3i Cover Screw	BIT6
■	Square 1.3mm/.050 inch Gold Screw/Nobel Biocare	BIT7

Customization available

Universal Drivers

Long- and short-handled drivers work with all major implant systems

Finally, universal drivers for abutments and cover screws that will work with 95% of all implant systems sold in the United States. No more wasted time or rescheduling appointments while you try to figure out what type of implant system was placed in a patient. With these drivers you'll have the instrument you need.

Our long-handled drivers provide outstanding access between teeth and are specifically designed for maxillary cases.

Our short drivers are designed for anterior mandible cases. They are long enough to access the chimney in screw-retained prostheses.

All drivers are color-coded for easy identification. They are autoclavable and sold in sets of seven and also individually.

Short-handled drivers are 1.75 inches long.

Long-handled drivers are 4.25 inches long, and they are great for lab use, too!



OTA539 Long-Handled Drivers \$300
Set of 7

Individual Drivers, Long \$75

OTA540 Short-Handled Drivers \$300
 Set of 7
 Individual Drivers, Short \$75



	Tips		Short	Long
■	Straight Screwdriver	Straight Systems	OTA535	OTA530
★	SCS Screwdriver	Straumann	OTA536	OTA533
★	UniGrip Driver	Replace Select	OTA534	OTA527
⬡	Hex 1.3mm/.050 inch	Lifecore, Biohorizons, Astra, Zimmer	OTA524	OTA531
⬡	Hex 1.2mm/.048 inch	3i System	OTA537	OTA532
⬡	Hex 0.9mm/.035 inch	Friadent, Ankylos, 3i Cover Screw	OTA529	OTA528
■	Square 1.3mm/.050 inch	Gold Screw/Nobel Biocare	OTA525	OTA526



Customization available

RESTORING IMPLANTS

Mix 'n Match Universal Drivers

Take your pick

OTA's Mix 'n Match Universal Driver System gives the clinician instant access to any area of the mouth for any implant system! Eliminates the chaos in your practice by reducing the number of different driver systems in your practice.

See page 26 and 27 for more details.



- OTA724 Handle, Long Square \$100
- OTA725 Handle, Short Square \$100

Individual Bits \$75 each
 Bits work in the manual drivers
 and the handles

BOX FOR BITS:

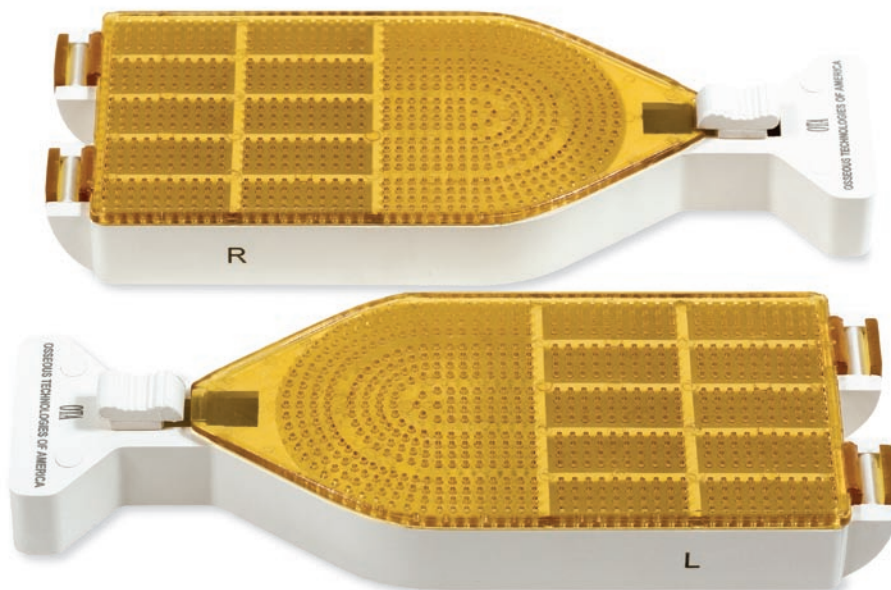
- OTA700 Box for 21 Bits \$125
- OTA701 Box for 9 Bits \$75
- OTA702 Box for 3 Bits \$50

Autoclave Box for Components

No more mixed up parts

How long have you been waiting for something like this? Designed by Renzo Casellini, MDT, the ABC box is an easy way to keep every component from an individual case in exactly the right place. The small compartments on the sides are for abutments, screws and crowns. The large compartment in the center holds bars, bridges and larger instruments used during procedures. Never again will you have to face a fiasco when the patient accidentally bumps the Mayo stand! If you have a busy practice, you'll want to have several ABC boxes on hand.

OTA135 ABC Box for Components \$95



Customization available

Abutment Holder

Reduce the risk of dropping abutments in your patient's mouth

Here's an easy solution to an all too common problem. The OTA abutment holder makes it easy to place an abutment and hold it in place while screwing down the abutment. It works with any implant abutment and is especially useful for posterior placements, where accidents are most likely to happen. Don't take chances. Order an OTA abutment holder today.



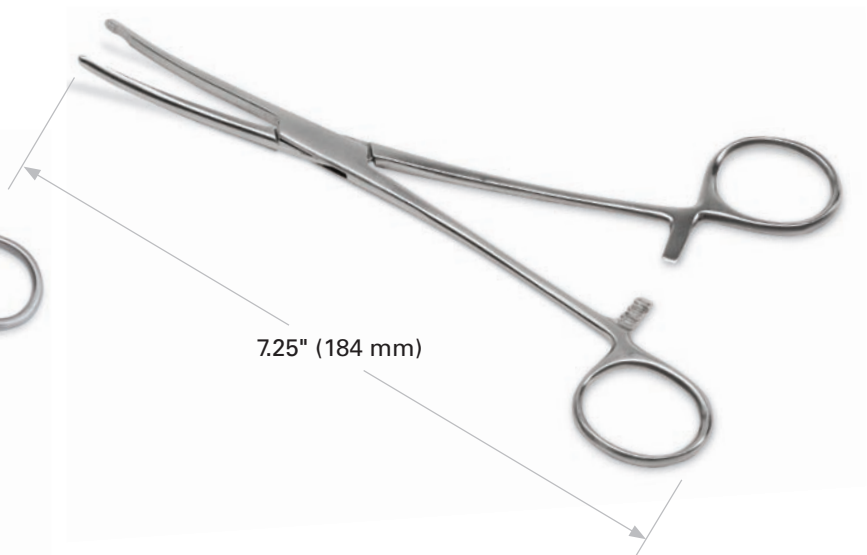
OTA800-1 Abutment Holder, Long \$150

OTA800-2 Abutment Holder, Short \$150

Abutment Holder, Short



Abutment Holder, Long



Special cement for implant restoration

ImplaTemp, developed by Renzo Casellini, MDT, is a non-eugenol temporary cement that is very adhesive. It provides good prosthesis retention, while allowing trouble-free removal. A unique two-stage set allows for quick and easy removal of excess cement from around the prosthesis. Implatemp provides reliable performance, even in cases of extended service time. It will adhere to most methylmethacrylate temporary materials, and is formulated to minimize post-operative discomfort.

OTA544 ImplaTemp \$65



Nessif Retractor

For surgical or restorative use

Designed by Dr. Richard Nessif, this stainless steel retractor gives you easier access to difficult sites. Autoclavable.

NR-1 Nessif Retractor \$50



Automatic Floss Dispenser

An economical way to subtly promote your practice

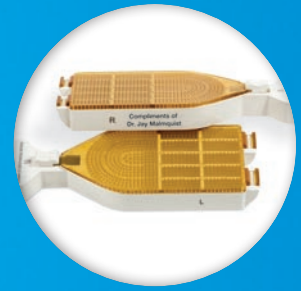
Here's a welcomed addition to almost any restaurant restroom—a high-capacity floss holder that automatically dispenses over 1,500 pieces of waxed dental floss, pre-cut to 13-inch lengths. Simply press the handle and out comes the floss. Simple operating instructions are shown on the dispenser.

There's also plenty of room for you to advertise your practice. The dispenser measures 9.1 inches tall x 6.7 inches wide x 2.8 inches deep. It quickly mounts to the wall with adhesive tape or two mounting screws (included). You'll also want a floss dispenser in your operator.

OTA510 Floss Dispenser	\$95
OTA520 Floss Dispenser + 10 Packs Floss Refill	\$195
OTA521 10 Pack Floss Refill	\$100
OTA522 Individual Floss Refill	\$12



CUSTOMIZATION SERVICES



Can customization drive your future?

We think it can and here's why.

In any country or region of the world implant surgeons are always looking for an edge in the market to grow their practice. If you are one of these implant surgeons, then our product customization service is worth exploring.

The reason is simple.

Implant surgeons need networking with others who can refer them business. How do you do this when just by virtue of your profession you are their competitor? The more unique options you have to say "thank you" can set you apart from the others.

With OTA's Customization Services, we can bring your referrals to you by customizing one of our products with a "thank you" or "compliments of" or anything you want to say that will fit on the product you choose. A small change to the way you may currently do business but we know that having your "gift" in front of your referrals will help enhance your practice, and help you build your referral base.



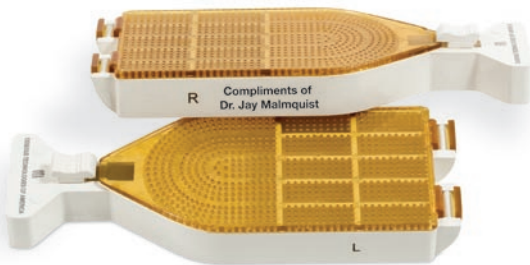
Long Handled Drivers



Bits for Right Angled Driver



Analog Holder



Autoclave box for components



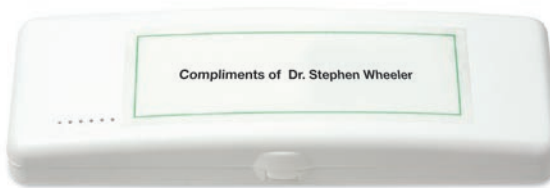
Short Handled Drivers

One particularly exciting idea we have had in the past was when one doctor sent our Right Angled Driver to all of his referrals with his "compliments" laser etched on each case. Every time the implant surgeons to whom he gifted these Drivers during the holidays, see his name and that of his partner's, he thinks about him and that thoughtful gesture. Goodwill builds your referral network. The recipients of those gifts paid him back with referrals over and over again! And, we have had more and more customers sending one of our products as a holiday gift because they are satisfied with our services.

A small investment for such a large return.

Don't miss this opportunity to experience what customization can mean to the future of your business.

An Elegant Alternative
to a Gift Basket.



Right Angled Driver



Products currently available for customization in quantities of 20 or more. Prices include laser etching. Call us for pricing or to find out if any of our other products can be customized for you.

Right Angled Drivers • Bits for Right Angled Driver • Long Handled Drivers
Short Handled Drivers • Autoclave Boxes for Components • Analog Holder

Mailing service to your referral base

Contact us at 866-901-5050

Shipping Rates and Delivery

Placing orders

You can place orders by phone, by fax or through our online store.

- Phone order – call us at (866) 901-5050
- Fax order – fax the order form to us at (949) 250-0197.
- Online order – visit our online store at <http://www.osseoustech.com/store/>
- Email order – info@osseoustech.com

Payments

Credit cards – we accept VISA, MasterCard, American Express and Discover Card. Your credit card will be charged at time of shipment.

When will my order be shipped?

Orders placed prior to 3:00 pm PST will be processed and shipped the same day. Orders placed after 3:00 pm PST or during weekend or holidays will be processed and shipped the next business day. We will email you notification and tracking information once your order is shipped.

Returns

In the event that your shipment is damaged, incorrect, or unsatisfactory, please call us immediately for a resolution. Special sales or final sales items are not returnable. Please call for your Return Authorization Code (RMA#); we cannot accept returns without an RMA#. All returns must be sent prepaid within 30 days of the date received. No collect shipments will be accepted. We recommend you insure the product(s) for their full value to protect yourself against loss or damage in shipping. A 30% restocking charge may be applied to your return if returned after 30 days.

Backorders

In the event that any ordered items are out of stock at the time your order is processed, those items become backordered automatically. Backordered items will be sent in a second shipment with no extra shipping/handling charge as soon as they become available. We shall notify you if the item(s) will not become available within a reasonable amount of time.

Change or Cancel an order

You may add, delete items or cancel your order if you email us before your order is shipped. Email us at janet@osseoustech.com

Shipping method and charge – Domestic

Shipping/handling charge is \$15 on each order delivered via ground shipping to the 48 continental states or \$30 on each order delivered to Alaska, Guam, Hawaii, Puerto Rico or the Virgin Islands. Unless requested otherwise, packages are shipped via Federal Express. Orders shipped within the U.S. are usually delivered within 3 to 6 business days. We also offer 2nd-day Air for an additional \$10.00 for shipment under 10 pounds. (Extra charge applies if over 10 pounds.)

Note: we must receive your order by 3:00 pm PST to ship the same day.

Shipping method and charge – International (including Canada)

International orders will be charged a minimum of \$100 for shipping/handling. If the actual shipping cost exceeds this amount, you will be notified by email of any shipping charge exceeding \$100. Your order will NOT be processed without your approval of the extra shipping charge. Custom clearance and tariffs, duty and/or broker fees, and any additional charges are the responsibility of the customer. The cost for ground shipping to Canada is \$50.

Packages for international orders are shipped via Federal Express. International orders normally arrives within 8 –12 business days from shipment. Do not count weekends or holidays. Customer is responsible for all duty and taxes at delivery.

Disclaimers

Osseous Technologies of America, Inc. is not responsible for typographical errors that may appear on our web site or catalog. We do not take any responsibility for any carriers for delays beyond our control.

You may write or call us at:

Osseous Technologies of America
4500 Campus Drive, Suite # 662
Newport Beach, California 92660
Toll free: 866-901-5050
Local Phone: 949-250-0184
Fax: 949-250-0197
Email: info@osseoustech.com

USA

Osseous Technologies of America

4500 Campus Drive, Suite # 662
Newport Beach, California 92660
Toll free: 866-901-5050
Local Phone: 949-250-0184
Fax: 949-250-0197
Email: info@osseoustech.com

Zimmer Dental

Carlsbad, CA 92008
Tel: 800-854-7019 (in USA)
+1-760-929-4300 (outside USA)

Henry Schein

Sullivan-Schein Dental Division
Melville, NY
Tel: 800-372-4346

INTERNATIONAL

AUSTRALIA

Everything 4 Implants
1/ 14 Garrong Rd.
Lakemba NSW 2195
Australia
Email: everything4implants@gmail.com

Pacific Dental Specialities

Greg Goodman, Director
Tel: +61 413 438 879
Web: www.pacificspecialties.com.au

BELGIUM

Dental Impro
Peter De Gendt
Tel: 32 476 47 81 29
Email: peter.olegendt@pondors.be
Web: www.dentalimpro.be

BULGARIA

Teos Dental
Mr. Viktor Ivanov
Sofia, BG
Tel: 359 (02) 4606149

CANADA

Citagenix, inc
Michael Mcmillan
Quebec, Canada
Tel: 877-243-6724
Email: orders@citagenix.com

CHINA

Advance Dental Consulting Ltd.
Ms. Jennifer Tse
Kowloon, Hong Kong s.a.r. China
Tel: 852 2384 7666
Fax: 852 2388 0960
Email: jennifer@adchk.com

HealthCare Dental Limited

Cardio Wan
Hong Kong SAR, China
Tel: 852 2579 9320
Email: sales.hcdental@hcdh.com.hk

Henry Schein Hong Kong

Kowloon, Hong Kong s.a.r. China
Email: elaine.leung@henryschein.com

FRANCE

MIS France
Eaubonne, France
Tel: 0033 130 105 157
Email: Mis.bensimon@orange.fr

ISRAEL

Alpha-Bio Ltd.
Petach -Tikva, Israel
Tel: 972 3 9291000 ext. 3004
Email: oshratg@alpha-bio.net

Matrix

Arfi Ronit, C.E.O.
157 Herzel St.
Rehovot, Israel
Tel: 972 50 3202701
Email: arfi-ronit@bezeqint.net

ITALY

Butterfly Italia srl
20040 Cavenago Brianza (MI), Italia
Tel: 39 02 95 33 52 46
Fax: 39 02 95 33 60 00
Email: flavia@butterflyitalia.it
Web: www.butterflyitalia.it

Implantium Italia srl

P.le Baiamonti, 3
20154 Milano, Italia
Tel: 39 02 33 60 11 53
Email: info@implantium.it

LEBANON

Prodent

Rola Helou, Operations Manager
Beirut, Lebanon
Tel: 96 11 425 042
Email: r.helou@prodent-me.com

LITHUANIA

Jsc "Med Grupe"

Olimpieciu 5-3, Vilnius
Lithuania, Lt-09200
Tel: +370 5 2190009
Fax: +370 5 2756850
Mob. tel.+370 600 19252
Email: justina@medgrupe.lt

MEXICO

Conectores Dentales

Saul Lozada Lorences
Miravalle, Mexico
Tel: 815 000 91 63
Email: saul@conectoresdentales.com

Dabo Corporation

Mr. Hiram Bogarin
Av. Madero #1230
Tijuana, B.C., C.P. 22000, Mexico
Tel: 664 685 62 94
Email: hirambogarin@dabocorp.com

NORWAY

Technomedics Norge AS

Gramveien 68
1832 Askim, Norway
Email: ek@technomedics.no

RUSSIA

Maximum for Implantology

Maxim Plushev
Office 1, Usacheva Street 62/1
Moscow, 119048, Russia
Tel: +7 495 245-7785
Fax: +7 495 245-5279
Cell: +7 499 136 61 34
www.maximum.su
info@maximum-implants.ru

SWEDEN

SD Dental

Dr. Rasmy Shahnavaz
Stockholm, Sweden
Email: rs@sddental.se

SPAIN/PORTUGAL

Aesthetic Dentistry LDA

Jaime Ferreira
Torres Amoreiras
Torre 2, Piso 4, Sala 3
Lisbon 1070-102, Portugal
Email: clinicajr@sapo.pt

TAIWAN

Biotech Medical Science Co

7f-1 No. 142, Hwa-Mei W. St., Sec 1
Taichung City 403, Taiwan ROC
Email: cecilia@biotech-taiwan.com

UNITED KINGDOM

Henry Schein UK

Gillingham, Kent ME8 OSB
Email: cliff.franks@henryschein.co.uk

Implantium UK LTD

Shrewsbury SY13GZ, England
Email: info@implantium.co.uk

VIETNAM

SDDS, Co. Ltd

Hanh Nguyen, Director
Hanoi, Vietnam
Tel: +84 90 344 7746
Email: mihanhan@yahoo.com

Adapter, Square to Latch	26	Drivers, Implant	26	Pins, Surgical Guide.....	23
Balloon for Sinus Lifts.....	34	Drivers, Implant	27	Press, Osseous	14
Balls, Marking.....	12	Drivers, Universal Set of 7 Long.....	62	Puller, Crown	57
Bits, Square (for Implant Drivers).....	27, 28, 59	Drivers, Universal Set of 7 Short	63	Punch, Dental Hole.....	31
Box for Bits.....	29	Drivers, Universal, Implant	28	Punches, Tissue.....	18
Box, Autoclave for Components.....	65	Drivers, Universal, Implant	64	Reamer, Hatch.....	40
Calipers.....	8	Easy X-TRAC.....	6	Retractor, Nessif.....	68
Calipers, Right Angled.....	9	Expanders, Bone	7	Scissors, Suture Removal.....	12
Cement, Temporary, Impatemp.....	67	Floss, Dental Dispenser	68	Shipping Rates and Delivery	72-73
Chisels, Ridge Splitting.....	16	Funnel, Bone	13	Vibraject.....	25
Clamps, Fixation	10-11	Gliders, Osseous	4	Wrench, Adjustable Torque	59
Collagen.....	42-43	Grafter, Osseo-Tip	15	Wrench, Universal Torque	58
Collagen, CurV Anterior	48	Grafting, algisorb (C-Graft)	51		
Collagen, CurV Posterior	47	Grafting, Osteokor	50		
Collagen, Resorbable.....	49	Grafting, Premier TCP.....	52		
Collagen, Sinus Capsule	46	Holder, Abutment	66		
Collagen, Socket Capsule	44	Holder, Analog	56		
Collagen, Wedge	46	Instrument, Placement Collagen.....	32		
Collectors, Osseous	5	Instruments, Capsule Delivery	30		
Customization Services.....	70-71	Instruments, Scissors Collagen.....	31		
Depth Gauges	20-21	Kit, Sinus Lift RCSLK.....	36		
Distributors.....	74-75	Kit, Sinus Lift Standard	39		
Drill Stops	20-21	Kit, Sinus Lift ZM.....	38		
Drills, Extended Length.....	19	Mill, Osseous	14		
Drills, Trephine	17	Motor, Anthogyr	24		
Driver, Bits, Latch-type	61	Osteotomes, Angled	22		
Driver, Right Angled.....	60	Packers, Graft	13		
Driver, Right Angled Torque Adapters	60	Periotomes	2		
		Periotomes, Molar	3		



Have a nice day.



4500 Campus Drive, Suite # 662 | Newport Beach, California 92660 | www.osseoustech.com